



floating\_sheep [Jun 12, 12:47pm](#) [[Floatingsheep.org](#)] Sheep Camp Approacheth [bit.ly/N9IR4o](#)  
#sheepcamp



mappingmashups [Jun 12, 3:41pm](#) This Friday in LEX I'm giving a lightning talk on "Countermapping DigiPlace" RT @floating\_sheep: #SheepCamp Approacheth [bit.ly/N9IR4o](#)



kg\_geomapper [Jun 14, 8:27am](#) hey #sheepcamp ers - if anyone is flying into LEX this wknd, ck out @MondoWindow 's interactive flight map - shows what ur flying over :)



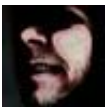
mattmoehr [Jun 14, 9:25am](#) Whoa. Indiana is bigger than I thought. Time for a little road trip to Lexington, KY for @floating\_sheep #sheepcamp cc @mappingmashups



kg\_geomapper [Jun 14, 9:26am](#) at #EWR headed for #sheepcamp [pic.twitter.com/hpBXeiPJ](#)



floating\_sheep [Jun 14, 10:51am](#) #SheepCamp unofficially starts today!



dwtkns [Jun 14, 11:37am](#) Leaving soon for #sheepcamp w/ @floating\_sheep, then off to cram as much @nytgraphics magic into my head as I can. Should be a fun summer!



JessiBreen [Jun 14, 12:11pm](#) #sheepcamp bound!



rushgeo [Jun 14, 1:28pm](#) On my way to Lexington for #sheepcamp!



UKarts\_sciences [Jun 14, 2:01pm](#) @rushgeo @floating\_sheep #sheepcamp sounds awesome! what are the topics for this year?



geographiliac [Jun 14, 4:08pm](#) #SheepCamp is here! Excited for talks from @geoplace @mappingmashups @kg\_geomapper @wilsonism @mattzook @JeremyCrampton @dwtkns & @jts\_geo



rushgeo [Jun 14, 5:21pm](#) Made it! #sheepcamp (@ Keeneland Hall) [4sq.com/OLnF0y](#)



rushgeo [Jun 14, 5:41pm](#) My reputation preceeds me? #dormlife #bottombunk #sheepcamp [pic.twitter.com/LenTSMQj](#)



GeoKoring [Jun 14, 9:54pm](#) Enjoying beers at Country Boy with the #SheepCamp crew



geoplace [Jun 15, 5:09am](#) Dear #SheepCamp Sorry I can't be there today, but looking forward to virtually beaming in this evening to talk about Wikipedia's geographies



JeremyCrampton [Jun 15, 6:29am](#) On way to #sheepcamp at #UKY! Irony I have to fly down to it but excited to be back for w/e



mattmoehr [Jun 15, 9:52am](#) #sheepcamp day 2: Woodford and Buffalo Trace distilleries. And lightening talks. cc @floating\_sheep



mappingmashups [Jun 15, 10:07am](#) All attendees of #sheepcamp will get +K about sheep on @klout. #occupyklout



floating\_sheep [Jun 15, 11:54am](#) #sheepcamp participants are off for a bourbon distillery tour... still a handful of folks arriving later today!



GeoKoring [Jun 15, 12:41pm](#) The learning experience at #SheepCamp has begun with an educational tour at the Buffalo Trace Distillery #cheers



JeremyCrampton [Jun 15, 1:25pm](#) Arrived Kaintuck finally. Lunch then #england game then #sheepcamp #priorities



mappingmashups [Jun 15, 2:48pm](#) Ready for a full-on geo-geek workshop weekend at #SheepCamp. Yes, it's a weird name. I know. [4sq.com/MvQMEQ](#)



mappingmashups [Jun 15, 3:53pm](#) Contemplating the geoweb (or do I mean the memex?) in a 1945-vintage dorm room. (1954, actually) #sheepcamp [pic]: [4sq.com/Mda91B](#)



kg\_geomapper [Jun 15, 4:18pm](#) @mappingmashups Are you lucky enough to have one of the pink bathrooms? #sheepcamp



mappingmashups [Jun 15, 4:19pm](#) @kg\_geomapper Yes! Oddly enough, I hadn't noticed the pinkness. Guess I was trying not to look too closely. #sheepcamp



CityResearch [Jun 15, 4:59pm](#) En route to #sheepcamp - big and user generated #geodata jam session in #lexington [instagr.am/p/L6KfBAmXzz/](#)



ge01d [Jun 15, 5:26pm](#) Learning about Kentucky at #sheepcamp looking forward to jumping into the nerdery!



floating\_sheep [Jun 15, 6:55pm](#) #sheepcamp is officially underway! [pic.twitter.com/EZB8HgV0](http://pic.twitter.com/EZB8HgV0)



GeoKoring [Jun 15, 7:23pm](#) Cajun food and lightning talks to officially open up #SheepCamp [pic.twitter.com/5GlwsHWH](http://pic.twitter.com/5GlwsHWH)



shanodine [Jun 15, 7:24pm](#) Hanging out at #sheepcamp, looking forward to the first lightning talk: Guns, Germans, and Strip Clubs by Monica Stephens! @floating\_sheep



JeremyCrampton [Jun 15, 7:29pm](#) #sheepcamp is the official hashtag!



mattmoehr [Jun 15, 7:30pm](#) @floating\_sheep #sheepcamp #osm LIGHTENING TALKS GOOOOO!



logicalfallacy [Jun 15, 7:35pm](#) swinger clubs vs kindergartens in social media. Sad, funny and enlightening by @geographiliac at #sheepcamp



shanodine [Jun 15, 7:49pm](#) Matthew Wilson just gave an awesome presentation on sheep for #sheepcamp!! @floating\_sheep #rethinkppt



JeremyCrampton [Jun 15, 7:53pm](#) Matt Wilson at #sheepcamp [pic.twitter.com/DO6EzBHC](http://pic.twitter.com/DO6EzBHC)



GeoKoring [Jun 15, 7:56pm](#) Oh yeah, @wilsonism went there with the sheep metaphor #SheepCamp



logicalfallacy [Jun 15, 7:56pm](#) Sasha totally lied to me about not doing a presentation, that said, this talk is great. #sheepcamp



logicalfallacy [Jun 15, 8:00pm](#) Sasha explaining why wordles are useless and geovista quite nice. @A\_C\_Robinson gets a name check. #sheepcamp



JessiBreen [Jun 15, 8:07pm](#) #sheepcamp lightning talks. Wow! They're going on the website. Check them out.



shanodine [Jun 15, 8:08pm](#) Fascinating ideas about combining text and maps from Alexander Savelyev! #sheepcamp



logicalfallacy [Jun 15, 8:14pm](#) I wish I had @mappingmashups maps of Vancouver during the 2010 games. Counter-mapping and content creation @ #sheepcamp



mappingmashups [Jun 15, 8:29pm](#) Really slick #sheepcamp presentation by @dwtkns about language and geolocated Flickr photos along the US-Mex border... Nice maps.



mappingmashups [Jun 15, 8:35pm](#) Now up, "user-generated political geographies" from @jts\_geo. Love the user reviews of Osama's hideout on Google Places. #sheepcamp



mappingmashups [Jun 15, 8:42pm](#) Next up @mattmoehr talking about neighborhood effects in sociology, and flickr's (sometimes) useful crowdsourced nbhd boundaries. #sheepcamp



mappingmashups [Jun 15, 8:48pm](#) #sheepcamp: @mattmoehr 's last slide was [prettymaps.stamen.com](http://prettymaps.stamen.com) by @thisisaaronland



mappingmashups [Jun 15, 8:51pm](#) What if we could map emotional experiences of the city through a kind of geosocial check-in app? @kg\_geomapper tests on herself. #sheepcamp



mappingmashups [Jun 15, 8:54pm](#) .@kg\_geomapper 's emotion maps remind me of Christian Nold's [BioMapping.net](http://BioMapping.net) project... but without the apparatus. #sheepcamp



mattmoehr [Jun 15, 8:56pm](#) @kg\_geomapper has beautiful maps. I think #sheepcamp should dedicate tomorrow to making an app called 'My Happy Place.' Yeah?



shanodine [Jun 15, 8:58pm](#) @kg\_geomapper Have u tried overlaying community health data on your neighborhd, looking @ connections btwn phys&emotional health? #SheepCamp



mappingmashups [Jun 15, 9:03pm](#) "The reports of the death of distance have been greatly exaggerated. ...but it might be a zombie" -@rushgeo #sheepcamp



kg\_geomapper [Jun 15, 9:05pm](#) @alogicalfallacy @mappingmashups oh yeah, my idea was largely inspired by that project. #sheepcamp



kg\_geomapper [Jun 15, 9:05pm](#) @mattmoehr @JessiBreen love that idea :) #sheepcamp



JessiBreen [Jun 15, 9:10pm](#) Zombies! #sheepcamp



Org9 [Jun 15, 9:12pm](#) Er, if you #sheepcamp peeps need any #geonerds to follow try this: [twitter.com/#!/Org9/maps-g...](https://twitter.com/#!/Org9/maps-g...) and don't forget @geo\_rube b/c he is the MF'ing-est



shanodine [Jun 15, 9:13pm](#) Enjoying Matthew Zook's presentation on the macabre subject of Mapping the Virtually Undead. ;) #SheepCamp





shanodine [Jun 15, 9:14pm](#) Is it "virtually" undead, or "virtual" undead? Discuss. #SheepCamp



JessiBreen [Jun 15, 9:15pm](#) Zyberscape = zombies on the web #sheepcamp #neologism



shanodine [Jun 15, 9:16pm](#) Must remember to read Zombies in the Academy when it is published... #SheepCamp



GeoKoring [Jun 15, 9:16pm](#) "Mapping Zombies: A Guide for Digital Pre-Apocalyptic Analysis Post-Apocalyptic Survival" from @mattzook #ftw #SheepCamp



alogicalfallacy [Jun 15, 9:16pm](#) Honestly shocked at lack of zombi discussion in Italy in @mattzook presentation. #sheepcamp



floating\_sheep [Jun 15, 9:17pm](#) @mattzook is in rare form with his zombie presentation wrapping up the evening's lightning talks #sheepcamp [pic.twitter.com/dARvDJfH](http://pic.twitter.com/dARvDJfH)



shanodine [Jun 15, 9:17pm](#) Matthew Zook and team should really start playing #PleaseStayCalm ! #SheepCamp



rushgeo [Jun 15, 9:19pm](#) "Zombies will be primarily killed by shotguns in the UK" #sheepcamp



rushgeo [Jun 15, 9:27pm](#) zombie based learning?! [kickstarter.com/projects/hunte...](http://kickstarter.com/projects/hunte...) #sheepcamp



mappingmashups [Jun 15, 9:27pm](#) @mattzook mentions this "zombie-based learning" curriculum on kickstarter: [kickstarter.com/projects/hunte...](http://kickstarter.com/projects/hunte...) #sheepcamp



mappingmashups [Jun 15, 9:32pm](#) Pam Dempsey on a journalist's perspective on the geoweb. Lots of maps and apps on [cu-citizenaccess.org](http://cu-citizenaccess.org). #sheepcamp



shanodine [Jun 15, 9:32pm](#) Had a great time at the @floating\_sheep #SheepCamp kick off reception. Lots of good research being done by this group!



shanodine [Jun 15, 9:34pm](#) @adam\_reck: surely it 'virtual'. Otherwise, it would be 'mostly dead'. Look who knows so much... #SheepCamp



AndrewShears [Jun 15, 9:51pm](#) Jealous of the folks at #sheepcamp. That's okay. Tonight was #gyros, #DiscGolf and #BattlestarGallactica. Not #mapping, but still #winning.



rushgeo [Jun 15, 11:11pm](#) Hanson and bourbon? #sheepcamp [pic.twitter.com/GkwZkoed](http://pic.twitter.com/GkwZkoed)



giorgialupi [Jun 15, 11:47pm](#) @mappingmashups @kg\_geomapper sounds great (wish to be there #sheepcamp) check #pleens : [accurat.it/pleens/](http://accurat.it/pleens/) we're testing it in italy



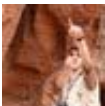
rushgeo [Jun 16, 12:24am](#) GIS state of mind. "I'm the new Dangermond" [youtube.com/watch?v=4mCDUf...](http://youtube.com/watch?v=4mCDUf...) #sheepcamp



ge01d [Jun 16, 12:30am](#) G-I-Yes #SheepCamp



mappingmashups [Jun 16, 12:36am](#) @AndrewShears aww, @rushgeo & @alogicalfallacy & I were just reminiscing abt when we all met at aag2011. Wish u were here. #sheepcamp



Geodoc31 [Jun 16, 6:21am](#) @floating\_sheep would have love to be there with you folks. #sheepcamp



JessiBreen [Jun 16, 6:43am](#) Has anybody ever tried pulling map data off of [mapmyrun.com](http://mapmyrun.com/)? #sheepcamp



mappingmashups [Jun 16, 9:21am](#) The #sheepcamp unconference organizing has begun. Problem is we all want to talk about all the topics. Gonna be hard to split into groups.



rushgeo [Jun 16, 9:23am](#) Put a sheep on it #sheepcamp



ge01d [Jun 16, 9:30am](#) @mappingmashups How do you pick only two?! #sheepcamp



mappingmashups [Jun 16, 9:31am](#) The #sheepcamp ideas board [lockerz.com/s/217604866](http://lockerz.com/s/217604866)



mattmoehr [Jun 16, 9:33am](#) Ironically, #sheepcamp is about to split into data and theory groups. Oh, the tyranny of structure.



ge01d [Jun 16, 9:58am](#) I wish TweetDreams was available to the public. It would be fun to run during #sheepcamp [ccrma.stanford.edu/groups/tweetdr...](http://ccrma.stanford.edu/groups/tweetdr...)



kg\_geomapper [Jun 16, 10:44am](#) #sheepcamp ers discovering the smartboard and regressing into pure child-like excitement [pic.twitter.com/pPiNUQVG](http://pic.twitter.com/pPiNUQVG)



ge01d [Jun 16, 10:46am](#) Prince died?! #sheepcamp



mappingmashups [Jun 16, 10:47am](#) @ge01d What? What's going on over there? #sheepcamp



ge01d [Jun 16, 10:55am](#) @mappingmashups It's a sad day. #sheepcamp



mappingmashups [Jun 16, 11:00am](#) Apps that aid in dÃ©rives: Drift: [itunes.apple.com/us/app/drift/i...](https://itunes.apple.com/us/app/drift/id398546540) , Serendipitor: [itunes.apple.com/us/app/serendi...](https://itunes.apple.com/us/app/serendipitor/id398546540) #sheepcamp



mappingmashups [Jun 16, 11:01am](#) Also a 2002 app called Glitch. ... these via @alogicalfallacy #sheepcamp



mappingmashups [Jun 16, 11:03am](#) The theory team is playing with the smart board now. Pretending to be non-techies. Can room #2 send over a tech person pls? #sheepcamp



ge01d [Jun 16, 11:05am](#) @mappingmashups haha! Did you see Kristen's picture of "room #2" playing with our smart board? #sheepcamp



mappingmashups [Jun 16, 11:11am](#) Critiquing IBM's "Smart Cities" idea: [youtube.com/watch?v=vm8iDp...](https://youtube.com/watch?v=vm8iDp...) Compare "Open Source Urbanism" [domusweb.it/en/op-ed/open-...](http://domusweb.it/en/op-ed/open-...) via @SaskiaSassen #sheepcamp



JessiBreen [Jun 16, 11:15am](#) @mappingmashups Wait, why are we room #2? #sheepcamp



mappingmashups [Jun 16, 11:16am](#) @JessiBreen Uhoh... #sheepcamp



ge01d [Jun 16, 11:17am](#) @mappingmashups Wait, "room #1" is talking techniques? & are you getting into the community aspects? A lot of us want in on that #sheepcamp



ge01d [Jun 16, 11:17am](#) @JessiBreen @mappingmashups I was just thinking that. Calling them "room #1" felt wrong. #sheepcamp



mappingmashups [Jun 16, 11:18am](#) @ge01d Not really talking techniques, but we are taking about engagement and community empowerment now... #sheepcamp



mappingmashups [Jun 16, 11:18am](#) @ge01d @JessiBreen I should have called you "room 2.0". More flattering? #sheepcamp



ge01d [Jun 16, 11:20am](#) @mappingmashups Hoped we'd talk about that together later. Could you guys kind of get ideas together but not exhaust the topic? #sheepcamp



mattmoehr [Jun 16, 11:23am](#) @adam\_slez Well no. Geographers wanting to research all parts of the geoweb. Even the bits that don't have any coordinates. #sheepcamp



mappingmashups [Jun 16, 11:25am](#) Room 1.0 brings up @mhaklay's #aag2012 talk about participation inequality: [povesham.wordpress.com/2012/03/05/nob...](http://povesham.wordpress.com/2012/03/05/nob...) #sheepcamp



mappingmashups [Jun 16, 11:34am](#) "The geoweb seven years on"... we're calling this the "Rademacher origin myth". Where were YOU in the geoweb summer of '05? #sheepcamp



ge01d [Jun 16, 11:39am](#) Noticed I was only F in room disc. agenda for academic study of geoweb, but my perspective more informed by physical than gender. #sheepcamp



mappingmashups [Jun 16, 11:41am](#) @ge01d Yes, every time @geographiliac came into the room I was expecting she'd point that out. #sheepcamp



geographiliac [Jun 16, 11:42am](#) Moved from a twitter API teach-in to a debate over best language to code in... Room 2.0 at #sheepcamp



mappingmashups [Jun 16, 11:44am](#) @geographiliac Language wars in one room, theory wars in the other? #sheepcamp



ge01d [Jun 16, 11:46am](#) @mappingmashups @geographiliac Different methods for different skill sets & processes/interests. Room 2.0 = peaceniks #sheepcamp



ge01d [Jun 16, 11:48am](#) @insistondoubt I just learned that Mars and Earth are in Texas. ( #sheepcamp )



geographiliac [Jun 16, 11:49am](#) @ge01d @mappingmashups room 2.0 is more gender diverse. Men are the minority! #sheepcamp



mappingmashups [Jun 16, 11:49am](#) Food seems to be arriving. We have been trying to wrap up in room 1.0 for about 30 minutes, but this will force us to stop. #sheepcamp



mattmoehr [Jun 16, 11:56am](#) OH: "I like coding puzzles, but I'm not in it for code. It's just a way to do real research." #sheepcamp Critical Code Studies? @HaCCS



ebwolf [Jun 16, 11:59am](#) Sorry I'm missing #SheepCamp, especially the bourbon distillery tour!



mappingmashups [Jun 16, 12:37pm](#) At #sheepcamp @geographiliac asks for a #VGI (not VGA) cable to hook up a laptop to the projector. Does that count as a freudian slip?





mappingmashups [Jun 16, 12:39pm](#) Definitely a good complement to #sheepcamp also underway now. RT @mattdance: You should follow #thatcamp for #DH and #geoweb awesomeness.



mappingmashups [Jun 16, 12:42pm](#) RT @geographiliac: @mappingmashups, yes and @mattzook went to go look for one without noticing the 'freudian slip' #sheepcamp



mattdance [Jun 16, 12:46pm](#) Ahhhh... #sheepcamp #thatcamp #DH #geoweb it's a bust twitter day in #yeg today. CC/ @mappingmashups



floating\_sheep [Jun 16, 12:47pm](#) .@wilsonism wrapping up this morning's discussion of a research agenda for the geoweb and big data #sheepcamp [pic.twitter.com/ZDu3W53p](http://pic.twitter.com/ZDu3W53p)



mappingmashups [Jun 16, 1:08pm](#) We're re-dividing. I'm going to try out the renamed "skills" group (the group formerly known as the data group) in room 2.0. #sheepcamp



mattmoehr [Jun 16, 1:09pm](#) Don't forget, @alogicalfallacy, you owe me an email about the USGS grant about neighborhoods. #sheepcamp #collaborating



mappingmashups [Jun 16, 1:10pm](#) @re\_sieber, is your "research agenda for the participatory geoweb" online? I can only find the SKI abstract: [rose.geog.mcgill.ca/ski/system/fil...](http://rose.geog.mcgill.ca/ski/system/fil...) #sheepcamp



mappingmashups [Jun 16, 1:11pm](#) While we are talking about the twitter backchannel at #sheepcamp, I want plug my bi-weekly twitter chat #geowebchat: [mappingmashups.net/geowebchat/](http://mappingmashups.net/geowebchat/)



mappingmashups [Jun 16, 1:12pm](#) I think our next #geowebchat (on Tue June 19) should be a #sheepcamp debrief. Ppl who weren't here can ask us Qs, we'll share experiences...



mattzook [Jun 16, 1:13pm](#) #sheepcamp, currently being critiqued....oh the humanity



mattmoehr [Jun 16, 1:14pm](#) #meta RT @mattzook: #sheepcamp, currently being critiqued....oh the humanity



mattzook [Jun 16, 1:14pm](#) #sheepcamp enjoying watching @wilsonism try to use google docs, skills are being exchanged



vtraghead [Jun 16, 1:32pm](#) Between the @mapnikproject sprint and #SheepCamp this is one busy Saturday. To keep up with it all or go to the beach . . .



mappingmashups [Jun 16, 1:39pm](#) Here's MacEachren's geovisualization cube we've been talking about in room 2: [e-education.psu.edu/files/geog486/...](http://e-education.psu.edu/files/geog486/...) (from: [e-education.psu.edu/geog486/book/e...](http://e-education.psu.edu/geog486/book/e...)) #sheepcamp



kg\_geomapper [Jun 16, 1:43pm](#) Attempting to fill in a "framework" for approaching geoweb projects/research questions #sheepcamp [pic.twitter.com/wx91bPQ8](http://pic.twitter.com/wx91bPQ8)



ge01d [Jun 16, 1:46pm](#) @kg\_geomapper (from a specifically technical perspective. I think the other room is getting at it from the theoretical side.) #sheepcamp



GeoKoring [Jun 16, 1:47pm](#) Room 2.0 has slowly spiraled into organizing a 'framework' for approaching a #geoweb project #sheepcamp



jts\_geo [Jun 16, 1:48pm](#) Using my orals reading list draft as the start of a comprehensive bibliography on geoweb research #sheepcamp



kg\_geomapper [Jun 16, 1:49pm](#) @ge01d agreed. important distinction. #sheepcamp



mappingmashups [Jun 16, 1:51pm](#) @jts\_geo We have a stale bibliography at our Participatory Geoweb project here: [rose.geog.mcgill.ca/geoide/node/248](http://rose.geog.mcgill.ca/geoide/node/248) #sheepcamp



mappingmashups [Jun 16, 1:53pm](#) Also, @burnsr77 has a geoweb/neogeography bibliography here: [docs.google.com/document/d/14\\_...](http://docs.google.com/document/d/14_...) #sheepcamp



mappingmashups [Jun 16, 1:55pm](#) Is anybody at #sheepcamp using @zotero? My library is here: [zotero.org/almcccon/items/...](http://zotero.org/almcccon/items/...) (although my subfolders are not up to date)



geoplace [Jun 16, 1:56pm](#) Thanks: this is really helpful! RT @mappingmashups: @burnsr77 has a geoweb/neogeography bibliography here: [bit.ly/KCImPz](http://bit.ly/KCImPz) #sheepcamp



JessiBreen [Jun 16, 1:57pm](#) @mappingmashups @zotero I do, but not that heavily. #sheepcamp



mappingmashups [Jun 16, 1:58pm](#) @dwtkns points out this interesting visualization technique: [hiveplot.net](http://hiveplot.net) Pretty. #sheepcamp



ge01d [Jun 16, 1:58pm](#) Anyone at #sheepcamp know/interested in route selection/wayfinding?



jts\_geo [Jun 16, 1:59pm](#) @mappingmashups thanks for that series of links! Will start including in our master list! #sheepcamp



JeremyCrampton [Jun 16, 1:59pm](#) The Group 1 doc also has a bib via Taylor @mappingmashups @burnsr77 #sheepcamp



mappingmashups [Jun 16, 2:03pm](#) Room 2 has a rough framework for describing the parts of a geoweb proj (& tools/skills involved). Test scenario: emotion mapping. #sheepcamp



ge01d [Jun 16, 2:06pm](#) @mappingmashups which gets into route selection! BOOM. #sheepcamp



JessiBreen [Jun 16, 2:09pm](#) Room 2.0, how about a scale like this?  
[hyperboleandahalf.blogspot.com/2010/02/boyfri...](http://hyperboleandahalf.blogspot.com/2010/02/boyfri...) #sheepcamp



mappingmashups [Jun 16, 2:16pm](#) @JessiBreen Man, the ppl who aren't following twitter r missing out. On the other hand, they might actually know what's going on. #sheepcamp



mattzook [Jun 16, 2:16pm](#) #sheepcamp, grab food now before it goes up to the kitchen, Alan can you let folks know



mappingmashups [Jun 16, 2:18pm](#) Wrking our way thru data flow: @dwtkns "is this useful, should we stop?" Sasha: "The most interesting things are about to start!" #sheepcamp



mattmoehr [Jun 16, 2:18pm](#) I forgot to mention Apigee dot com as a resource. It's a point & click UI for dozens of APIs. #sheepcamp [pic.twitter.com/oNyzjllh](http://pic.twitter.com/oNyzjllh)



mappingmashups [Jun 16, 2:25pm](#) Watching the AAG CFP Google Doc, looks like room 1 is having lots of fun. But rm 2 has a narrative arc that I feel invested in... #sheepcamp



mattzook [Jun 16, 2:31pm](#) [sheepinator.com](http://sheepinator.com) is still available #sheepcamp



mappingmashups [Jun 16, 2:37pm](#) @mattzook Don't say it out loud! Beware the domain squatters! #sheepcamp



jts\_geo [Jun 16, 2:42pm](#) Tentative planning for #AAG2013 symposium on big data, the geoweb and society is exciting! #sheepcamp



ge01d [Jun 16, 2:49pm](#) Room 1.0 google doc is falling apart. I think we all need an outdoors break, too much basement time #sheepcamp



GeoKoring [Jun 16, 2:53pm](#) @ge01d yes, we need sunlight so we don't become zombies #sheepcamp



ge01d [Jun 16, 2:54pm](#) @geographiliac insects that look like fish? mayo? #sheepcamp



geographiliac [Jun 16, 2:56pm](#) @ge01d I came back to the room and @wilson was going crazy, not my fault. #spreadingfalseinformation at #sheepcamp.



geographiliac [Jun 16, 2:58pm](#) Mo' Money Mo' Problems at the bigscreen in room 1. Yes, time to get outside at #sheepcamp.



jts\_geo [Jun 16, 2:59pm](#) It appears that the more data one comes across, the more problems one should expect to see. #sheepcamp



mattzook [Jun 16, 3:01pm](#) #sheepcamp break time....



mappingmashups [Jun 16, 3:03pm](#) Taking a 30 min break. Be back at 3:30 everybody! #sheepcamp



DrHG [Jun 16, 3:14pm](#) @jts\_geo if I get my grant, could me in #sheepcamp #geowebchat



mappingmashups [Jun 16, 3:47pm](#) Back from break. Matt Z and Ate are explaining the Sheepinator. Hopefully it will be renamed by the end of this session. #sheepcamp



geographiliac [Jun 16, 3:48pm](#) Herded in by @mattzook and now back to work at #sheepcamp



mappingmashups [Jun 16, 4:01pm](#) Tools for researchers to collect tweets for analysis: [140kit.com](#) [tweetgrid.com](#) #sheepcamp



mappingmashups [Jun 16, 4:03pm](#) So apropos of our current #sheepcamp conversation: "Watch the world unfold in real-time with geo-located tweets" [bit.ly/LW3BKp](#)



mappingmashups [Jun 16, 4:15pm](#) We were defending "little data" earlier today at #sheepcamp, too. RT @placesense: in defense of little data #thatcamp



mattmoehr [Jun 16, 4:17pm](#) #sheepcamp'ers wondering about facebook data. This is a good way to get sued: [petewarden.typepad.com/searchbrowser/...](#)



mappingmashups [Jun 16, 4:17pm](#) Someone mentioned Pete Warden's Facebook map created by scraping: [petewarden.typepad.com/searchbrowser/...](#) and how he got sued: [petewarden.typepad.com/searchbrowser/...](#) #sheepcamp



logicalfallacy [Jun 16, 4:18pm](#) @mappingmashups @placesense yup. I'm thinking of an #AAG2013 session on importance and utility of "small dAta" CFp coming soon #sheepcamp





mappingmashups [Jun 16, 4:31pm](#). @wilsonism mentions [wheredidyouwearit.com](#), but PP wasn't trying to map condom use scientifically. @mattmoehr: "condom deserts?" #sheepcamp



mappingmashups [Jun 16, 4:49pm](#) EpiCollect: an android/iphone app where researchers can create a survey form for public data collection [epicollect.net](#) #sheepcamp



mappingmashups [Jun 16, 4:55pm](#) Free map stitching tool: [mapknitter.org](#), from @PublicLab #sheepcamp



GeoKoring [Jun 16, 4:58pm](#) visualize your Foursquare check-ins over time via [weeplaces.com](#) #sheepcamp



mattmoehr [Jun 16, 5:00pm](#) Community? Geoweb? I just want to teach people how to do this: [joindiaspora.com/posts/1647541](#) #sheepcamp



mappingmashups [Jun 16, 5:03pm](#) The jewelry made from your @foursquare checkins: meshu.io #sheepcamp



mappingmashups [Jun 16, 5:10pm](#). @geographiliac posits that we could look at @Grindr activity as a spatial indicator of Richard Florida's creative class... #sheepcamp



geographiliac [Jun 16, 5:12pm](#) we could look at @Grindr activity as a spatial indicator of @Richard\_Florida's creative class... #sheepcamp yes.



mappingmashups [Jun 16, 5:17pm](#) Using UGC to map source of fires: Police Slog Through 40,000 Insipid Party Pics To Find Cause Of Dorm Fire [onion.com/9Ago9e](#) #sheepcamp



mhaklay [Jun 16, 5:20pm](#) @mappingmashups look also for the Open Data Kit at UW for mobile forms. #sheepcamp sounds great - I hope that you are all having fun



geographiliac [Jun 16, 5:31pm](#) @mhaklay we wish you were here to join us at #sheepcamp, maybe a recap session at #AAG2013?



JessiBreen [Jun 16, 5:37pm](#) Ate and Sasha to the rescue. Mapmyrun's API has been decoded! #sheepcamp



mattmoehr [Jun 16, 5:39pm](#) Pizza is on the way. #sheepcamp



JessiBreen [Jun 16, 5:42pm](#) @mappingmashups My favorite map jewelry [blendcreations.com/item.php?item...](#) Bonus: It's also a bottle opener #sheepcamp



GeoKoring [Jun 16, 5:45pm](#) @JessiBreen @mappingmashups it's a bottle opener and a map?! #brilliant #sheepcamp



mappingmashups [Jun 16, 6:41pm](#) @jasondowns The presentations will be posted online soon, either at [floatingsheep.org](http://floatingsheep.org) or [newmaps.as.uky.edu](http://newmaps.as.uky.edu) #sheepcamp



mappingmashups [Jun 16, 7:07pm](#) New mailing list for #geoweb researchers: "geoweb-r" [groups.google.com/group/geoweb-r](https://groups.google.com/group/geoweb-r) #geowebchat #neogeoweb #sheepcamp #neogeography #GIS Please RT!



Richard\_Florida [Jun 16, 7:17pm](#) RT @geographiliac: we could look at @Grindr activity as a spatial indicator of @Richard\_Florida's creative class... #sheepcamp yes.



pamelagdempsey [Jun 16, 8:16pm](#) Enjoying an old fashioned at Bluegrass Tavern in Lexington #sheepcamp [sdrv.ms/LlKo5a](http://sdrv.ms/LlKo5a)



geographiliac [Jun 16, 8:18pm](#) #sheepcamp foursquare checkins.. @mappingmashups @rushgeo @JessiBreen [pic.twitter.com/xhJaFsiz](http://pic.twitter.com/xhJaFsiz)



floating\_sheep [Jun 16, 8:24pm](#) Last night of #sheepcamp, so a bar excursion is in order [pic.twitter.com/YPFrfgsA](http://pic.twitter.com/YPFrfgsA)



geographiliac [Jun 16, 11:05pm](#) At #sheepcamp , turning my phd defense into a virtual drinking game... Good idea?



kg\_geomapper [Jun 16, 11:23pm](#) #sheepcamp Weezer playing at Bluegrass Tavern. Talking about what can and cannot be deep fried...



kg\_geomapper [Jun 16, 11:45pm](#) #sheepcamp A NYer wonders "what is '5/3?'" [pic.twitter.com/50Y2GDIE](http://pic.twitter.com/50Y2GDIE)



kg\_geomapper [Jun 17, 12:42am](#) cheddar tots and oreo shake #sheepcamp@ Tolly-Ho [instagr.am/p/L9kGroP1y1/](http://instagr.am/p/L9kGroP1y1/)



JessiBreen [Jun 17, 7:45am](#) Oh yeah, Mayor of Sheepcamp! [4sq.com/KcD1XX](http://4sq.com/KcD1XX) #sheepcamp



geographiliac [Jun 17, 8:37am](#) Excited that @JessiBreen, the mayor of #sheepcamp , will be running festivities today!



rushgeo [Jun 17, 9:08am](#) The group just got excited about applying for a small grant due in a few days. #sheepcamp



ge01d [Jun 17, 9:13am](#) @kg\_geomapper These are important questions! #sheepcamp #DontFryGummyBears



mappingmashups [Jun 17, 9:43am](#) Some links mentioned in the #sheepcamp discussion abt finding/sharing/collecting digital stories: [hypercities.com](http://hypercities.com) [storycorps.org](http://storycorps.org)



mattmoehr [Jun 17, 10:01am](#) Note to self: take @coursera classes on imaging processing this summer. This recco from Ate last night. #sheepcamp [coursera.org/course/ml](http://coursera.org/course/ml)



mappingmashups [Jun 17, 10:03am](#) I added Sheep to @JessiBreen's's topics on @klout [klout.com/user/JessiBree...](http://klout.com/user/JessiBree...) #sheepcamp #occupyklout



ge01d [Jun 17, 10:16am](#) Project Codename DOLLY underway #sheepcamp



ge01d [Jun 17, 10:21am](#) #sheepcamp is enamored with collaborative Google Doc editing



mappingmashups [Jun 17, 10:23am](#) And who at #sheepcamp is on [academia.edu](http://academia.edu)? @academia. You can add which mailing lists you follow, like this one: [lists.academia.edu/Geoweb-R](http://lists.academia.edu/Geoweb-R)



JessiBreen [Jun 17, 10:24am](#) @rushgeo You coming back? #sheepcamp



floating\_sheep [Jun 17, 10:24am](#) #sheepcamp is dividing up the work for continuing the tasks we've started working on this weekend. In a way, #sheepcamp will never end!



geographiliac [Jun 17, 10:27am](#) #sheepcamp is wrapping up, but @rushgeo has escaped.



mappingmashups [Jun 17, 10:32am](#) I have enough +K to add "Sheep" to one more person on @klout. Who wants it? #sheepcamp #occupyklout



mappingmashups [Jun 17, 10:45am](#) I added Sheep to @joeckert's's topics on @klout [klout.com/user/joeckert...](http://klout.com/user/joeckert...) #occupyklout Wish you were here at #sheepcamp!



mappingmashups [Jun 17, 10:49am](#) In Research Agenda break-out group we note our current list is light on tech. Thinking of #geowebchat Qs: "knowing how to code" #sheepcamp



geoparadigm [Jun 17, 10:58am](#) @mappingmashups: Tools for researchers to collect tweets for analysis: [140kit.com](http://140kit.com) [tweetgrid.com](http://tweetgrid.com) #sheepcamp #twitter



mappingmashups [Jun 17, 11:03am](#) #sheepcamp @ SheepCamp [instagr.am/p/L-rMndqqh4/](http://instagram.com/p/L-rMndqqh4/)



mappingmashups [Jun 17, 11:07am](#) @joeckert @geoparadigm Joe, you're gonna love @floating\_sheep's twitter collector/analyzer code-named "sheepinator/dolly" #sheepcamp



mattmoehr [Jun 17, 11:17am](#) @jts\_geo says #geoweb is still a niche. #sheepcamp'ers have serendipitous routes to their research. Will our research agenda help?



mappingmashups [Jun 17, 11:29am](#) Hear that, #sheepcamp? RT @joeckert: As long as they open source it. Otherwise, it'll just have to be rebuilt again (and again) :)



ge01d [Jun 17, 11:46am](#) Chocolate in the livingroom #sheepcamp ers



mappingmashups [Jun 17, 11:48am](#) How come the Computational Culture journal ([computationalculture.net](http://computationalculture.net)) has broken feeds? Is there a twitter acct? An announce list? #sheepcamp



mattmoehr [Jun 17, 12:04pm](#) #sheepcamp SUCCESS. Now some Lexington lunching and some driving. Lots of driving..... (Damn you, Indiana.)



floating\_sheep [Jun 17, 12:09pm](#) #sheepcamp is officially wrapping up! Great to meet everyone and have you all to Lexington! And there's still more work to be done!



joeckert [Jun 17, 12:20pm](#) @mappingmashups and #sheepcamp - @SoMeLabResearch is building a modular interdisc. Twitter tool like R - dolly would be rad.



GeoKoring [Jun 17, 12:52pm](#) #sheepcamp has been very successful! Looking forward to continue working with such a good cohort of #geoweb researchers!



geographiliac [Jun 17, 12:58pm](#) The end of #sheepcamp. Thanks for coming to Lexington! [pic.twitter.com/JM2ZqhPi](http://pic.twitter.com/JM2ZqhPi)



mappingmashups [Jun 17, 1:00pm](#) #sheepcamp RT @dwtkns: .@mappingmashups Falsifying Foursquare checkins [krazydad.com/blog/2010/02/1...](http://krazydad.com/blog/2010/02/1...)



AdrienneOtt [Jun 17, 1:55pm](#) Thank you @mappingmashups for all the great #sheepcamp tweets!



rushgeo [Jun 17, 1:58pm](#) So long Kentucky, and thanks for all the sheep! (Er, #sheepcamp) On my way to Indianapolis for #PolisNEH





mappingmashups [Jun 17, 2:09pm](#) Am archiving all #sheepcamp tweets so we have a permanent record. Will post soon on [mappingmashups.net](http://mappingmashups.net) or [floatingsheep.org](http://floatingsheep.org) (or both!)



mappingmashups [Jun 17, 2:11pm](#) Some learn-to-code tools: [codecademy.com](http://codecademy.com) [code.google.com/edu](http://code.google.com/edu) [hackny.org/a/about](http://hackny.org/a/about) via @geographiliac and @ge01d #sheepcamp



ge01d [Jun 17, 2:32pm](#) Someone was asking about Girls Around Me #sheepcamp [new-aesthetic.tumblr.com/post/202171150...](http://new-aesthetic.tumblr.com/post/202171150...)



kg\_geomapper [Jun 17, 2:46pm](#) @mappingmashups For those of us outside of the room, the conversation was all about tech and knowing how to code. Interesting. #sheepcamp



CityResearch [Jun 17, 3:37pm](#) #sheepcamp at the univ of #kentucky was rad -moving forward the big #geodata discourse - thanks @mattzook & @floating\_sheep for organizing



mappingmashups [Jun 17, 3:51pm](#) New meme for @floating\_sheep [memegenerator.net/instance/22138...](http://memegenerator.net/instance/22138...) #sheepcamp [twitpic.com/9xm0qu](http://twitpic.com/9xm0qu)



wilsonism [Jun 17, 4:22pm](#) @mappingmashups Thanks for asking about conspicuous mobility research. Who was the UWer that studied 4SQ qualitatively? #sheepcamp



mappingmashups [Jun 17, 4:33pm](#) @wilsonism Matthew Kelley: The Emergent Urban Imaginaries of Geosocial Media [meridian.aag.org/callforpapers/...](http://meridian.aag.org/callforpapers/...) #sheepcamp



mappingmashups [Jun 17, 4:43pm](#) Leaving #sheepcamp with a heavy heart (@ Blue Grass Airport (LEX) w/ 4 others) [4sq.com/KFb0hU](http://4sq.com/KFb0hU)



wilsonism [Jun 17, 5:44pm](#) I've posted my #sheepcamp slides for the lighting talk: Beyond Counting Sheep. [ow.ly/bDqd3](http://ow.ly/bDqd3) #geoweb #critgis #sheepjudging



geographiliac [Jun 17, 6:11pm](#) Post #sheepcamp... Keenland hall. [pic.twitter.com/ZlILxMgN](http://pic.twitter.com/ZlILxMgN)